



**DATE:** *April 17, 2024*

**TO:** *Worcester Conservation Commission*

**FROM:** *Cesar L. Valiente, DPW and Parks - Capital Project Division*

**SUBJECT:** *Green Hill Golf Course RDA Application for 06-05-2024 Meeting – Work of Description*

**1. Purpose of Proposed Work:**

- a. DPW and Parks is proposing to perform initial minor work/renovation to the subdrains, to alleviate the surface flooding/standing water at the fairway of hole No.9. Scope of work is an attempt to capture the surface runoff from the adjacent hillside at the portion of the fairway that exhibits the perennial standing water.

**2. Scope of Proposed Work:**

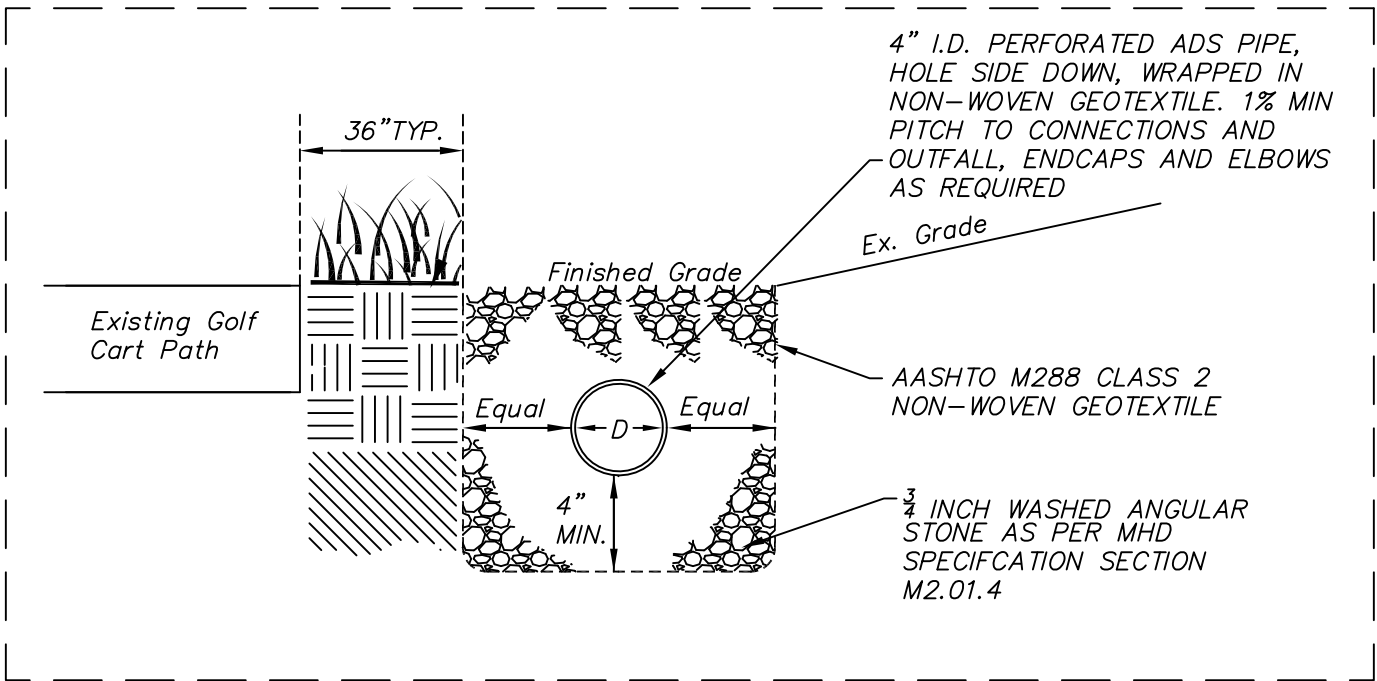
- a. Propose work is to install 100 LF for NEW subdrain to be parallel and 36” north of the existing sidewalk, using 4” perforated pipe surrounded in a silt sock and  $\frac{3}{4}$  stone to finished grade. We estimate the new trench cross section to be about 24” x 24” square. This new subdrain will be connected to an existing subdrain that traverses the fairway and is perpendicular to the existing sidewalk.
  - i. See Detail D-1A
- b. As a secondary measure to ensure the newly captured surface runoff is, we also propose to rebuild the entire length (+/- 150 LF) existing subdrain lateral of similar construction as the new proposed subdrain. The existing subdrain currently daylights approximately +/- 60 feet of the edge of Green Hill Pond.
  - i. See Detail D-1B

**3. Schedule:**

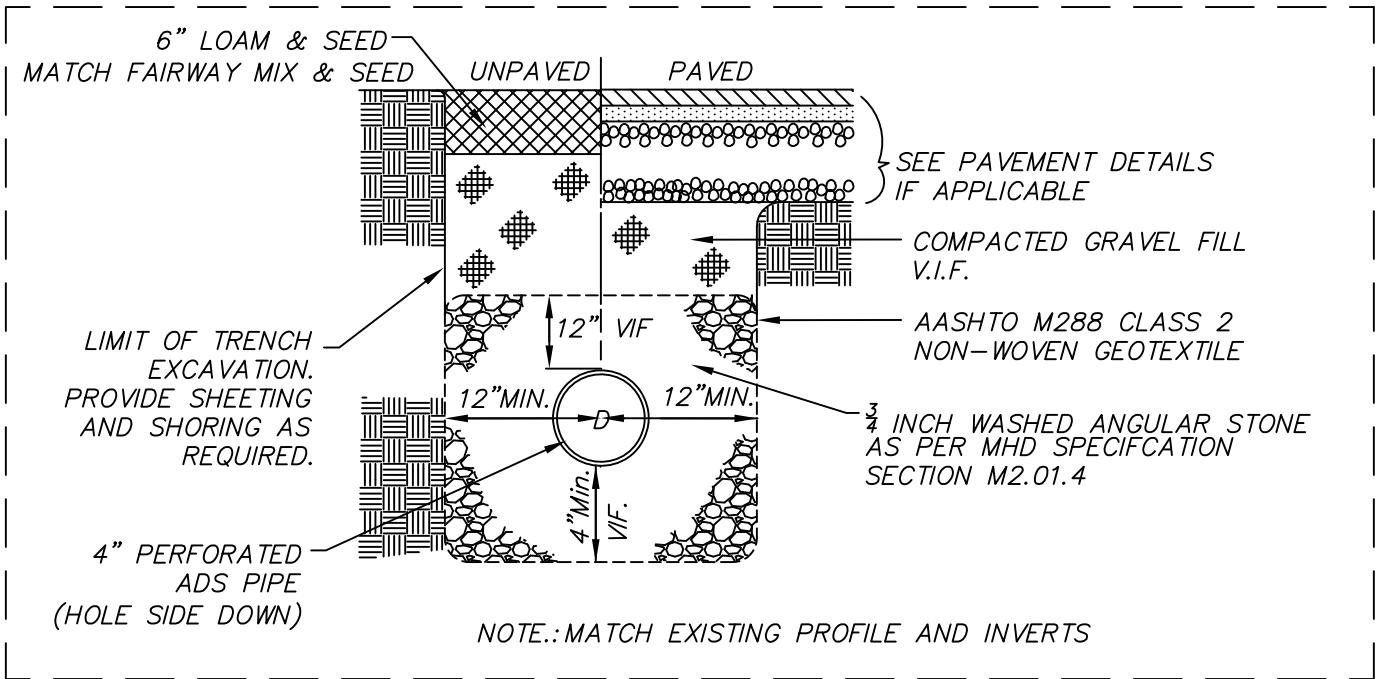
- a. Proposed Work is scheduled (TBD) to be performed by DPW and Parks staff and estimate the work will require about 30 days to complete, subject to site conditions, weather, and available staffing. Sediment and erosion controls will be placed and maintained at existing subdrain where it daylights into Green Hill Pond.

**RECEIVED**

By *Mattie VandenBoom* at 1:02 pm, Apr 17, 2024



**A** Typical X-Section of Proposed New Subdrain  
NTS



**B** Typical X-Section of Proposed Renovated Ex. Subdrain  
NTS



Dept. Of Public Works & Parks  
Capital Projects Division  
ROBERT C. ANTONELLI, JR.  
Assistant Commissioner

Parks, Recreation & Cemetery Division Standard  
Details - Perforated Pipe Subdrain at GHP Golf Course

Not to Scale  
ConCom RDA 05-06-2024

D-1



Note:

USGS Map "q177890 & 181890.tif" provided and downloaded from The of Commonwealth of Massachusetts Geographic Information System's website.



CAPITAL PROJECTS DIVISION  
 Department of Public Works & Parks  
 ROBERT C. ANTONELLI, JR.  
 Assistant Commissioner



Green Hill Park Golf Course Hole # 9

LOCUS MAP - USGS

Scale: 1" = 1000'

April 17, 2024

L.1

# Green Hill Golf Course - Hole # 9 Existing Conditions

- Hydrants
- Parcels
- City



March 14, 2024



1" = 40 ft

**DATA SOURCES:**  
Basemap data: City of Worcester, MA Geographic Information System  
Original Data - Digitized at 1:480 scale (Data true resolution: 1 inch = 40 feet).  
Updated Using Spring 2003 Photography at 1 inch = 100 feet  
Further Updates Using City of Worcester Information  
Property Details: City of Worcester, MA Assessing Division

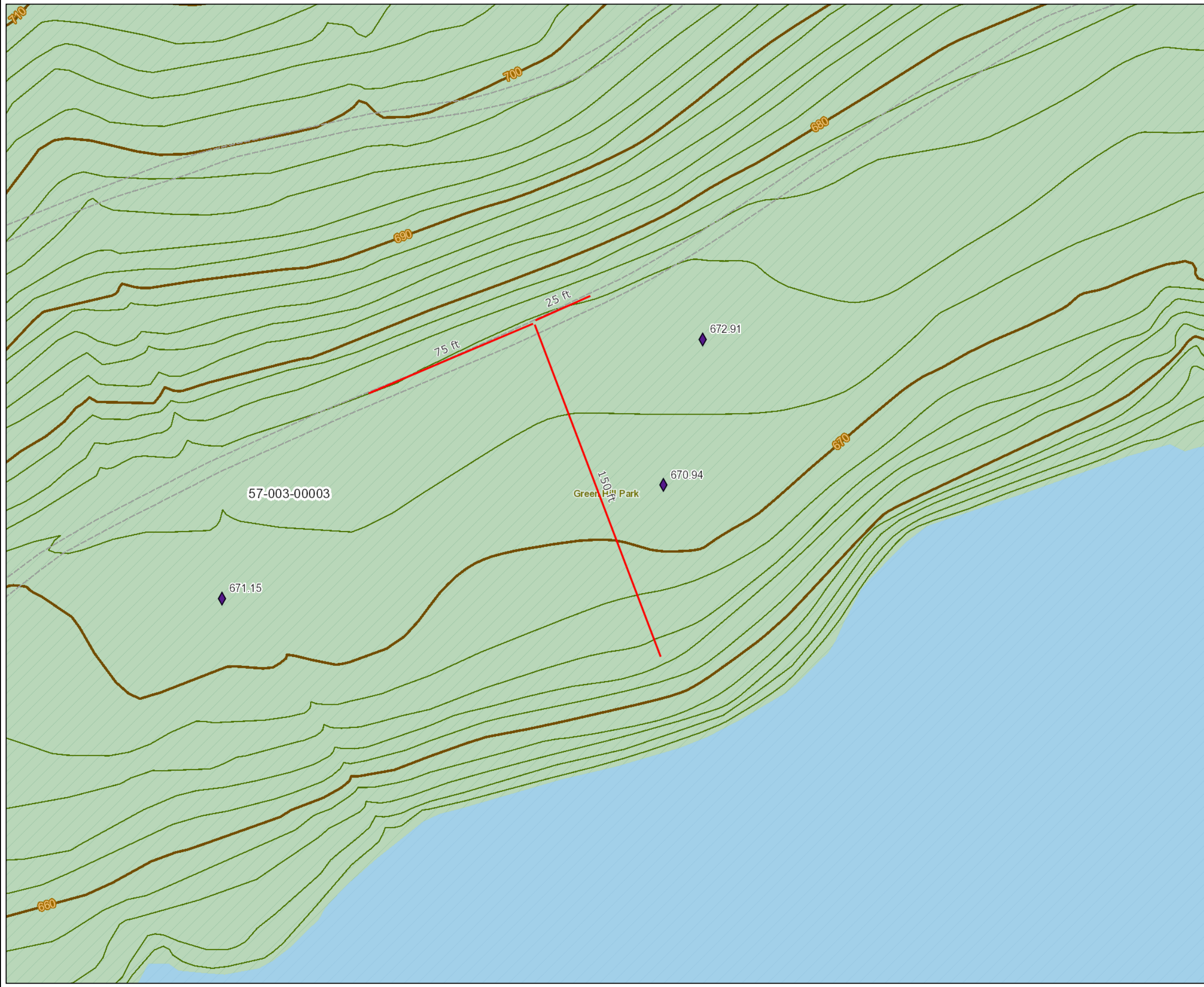
**COORDINATE SYSTEM:**  
All map data is in the Massachusetts State Plane Coordinate system, North American Datum of 1983, Massachusetts Mainland Zone (4151). Units are measured in Feet. Vertical Datum NAVD88.

**DISCLAIMER:**  
Considerable effort has been made to ensure the accuracy, correctness and timeliness of data presented; however, this information is only as accurate as its sources and may not reflect the most current information. This map is a graphical representation of information for tax administration purposes only and does not represent a professional survey. The City of Worcester assumes no liability for any errors, omissions or inaccuracies and makes no warranty, representation or guaranty of any kind as to the content or for any decisions made or actions taken or not taken by the user based upon any information provided on this map.



[www.worcesterma.gov](http://www.worcesterma.gov)

# Green Hill Golf Course - Hole # 9 Proposed Subdrain Renovations (countour plan)



- Driveways
- Parking Lots
- Edge of Pavement
- Road Surface
  - Paved
  - Unpaved
- Parcels
- Buildings
  - Building
  - Deck/Patio
- ◆ Spot Elevation
- Topography
  - Index Contour
  - Intermediate Contour
  - Streams
  - Ponds
- City
- Open Space
  - Conservation Restriction
  - City of Worcester Parks
  - Worcester Conservation Commission
  - Greater Worcester Land Trust
  - Massachusetts Audubon Society
  - Commonwealth of Massachusetts
  - Other (school, cemetery, private)

March 14, 2024



1" = 40 ft

**DATA SOURCES:**  
 Basemap data: City of Worcester, MA Geographic Information System  
 Original Data - Digitized at 1:480 scale (Data true resolution: 1 inch = 40 feet).  
 Updated Using Spring 2003 Photography at 1 inch = 100 feet  
 Further Updates Using City of Worcester Information  
 Property Details: City of Worcester, MA Assessing Division

**COORDINATE SYSTEM:**  
 All map data is in the Massachusetts State Plane Coordinate system, North American Datum of 1983, Massachusetts Mainland Zone (4151). Units are measured in Feet. Vertical Datum NAVD88.

**DISCLAIMER:**  
 Considerable effort has been made to ensure the accuracy, correctness and timeliness of data presented; however, this information is only as accurate as its sources and may not reflect the most current information. This map is a graphical representation of information for tax administration purposes only and does not represent a professional survey. The City of Worcester assumes no liability for any errors, omissions or inaccuracies and makes no warranty, representation or guaranty of any kind as to the content or for any decisions made or actions taken or not taken by the user based upon any information provided on this map.

# Green Hill Golf Course - Hole # 9 Proposed Subdrain Renovations

- Hydrants
- Parcels
- City



PROPOSED 100 LF OF NEW  
4" I.D. PERFORATED ADS PIPE, HOLE SIDE DOWN, WRAPPED IN  
NON-WOVEN GEOTEXTILE. 1% MIN PITCH TO CONNECTIONS AND  
OUTFALL, ENDCAPS AND ELBOWS AS REQUIRED

APPROXIMATE LOCATION  
OF POINT OF TEE CONNECTION

PROPOSED RENOVATION TO EX. SUBDRAIN PROFILE  
4" I.D. PERFORATED ADS PIPE, HOLE SIDE DOWN, WITH  $\frac{3}{4}$ "  
STONE, WRAPPED IN NON-WOVEN GEOTEXTILE.  
MATCH EXISTING PITCH.

APPROXIMATE LOCATION  
OF EXISTING OUTFALL

March 14, 2024



1" = 40 ft

**DATA SOURCES:**  
Basemap data: City of Worcester, MA Geographic Information System  
Original Data - Digitized at 1:480 scale (Data true resolution: 1 inch = 40 feet).  
Updated Using Spring 2003 Photography at 1 inch = 100 feet  
Further Updates Using City of Worcester Information  
Property Details: City of Worcester, MA Assessing Division

**COORDINATE SYSTEM:**  
All map data is in the Massachusetts State Plane Coordinate system,  
North American Datum of 1983, Massachusetts Mainland Zone (4151).  
Units are measured in Feet. Vertical Datum NAVD88.

**DISCLAIMER:**  
Considerable effort has been made to ensure the accuracy, correctness  
and timeliness of data presented; however, this information is only as  
accurate as its sources and may not reflect the most current information.  
This map is a graphical representation of information for tax administration  
purposes only and does not represent a professional survey. The City of  
Worcester assumes no liability for any errors, omissions or inaccuracies  
and makes no warranty, representation or guaranty of any kind as to the  
content or for any decisions made or actions taken or not taken by the  
user based upon any information provided on this map.



www.worcesterma.gov